

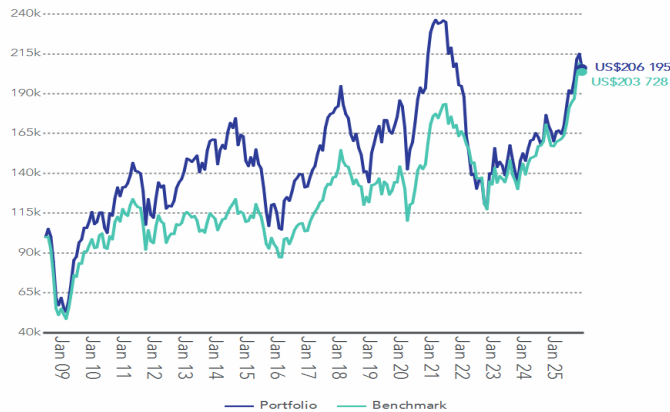
CORONATION GLOBAL EMERGING MARKETS FUND

CLASS B as at 30 November 2025

Launch date	14 July 2008
Fund size	US\$ 1.92 billion
NAV	14.60
Benchmark	MSCI Emerging Markets Index
Portfolio manager/s	Gavin Joubert, Suhail Suleman and Iakovos Mekios

PERFORMANCE AND RISK STATISTICS

GROWTH OF A US\$100,000 INVESTMENT (AFTER FEES)



PERFORMANCE FOR VARIOUS PERIODS (AFTER FEES)

	Fund	Benchmark
Since Launch (unannualised)	106.2%	103.7%
Since Launch (annualised)	4.2%	4.2%
Latest 15 years (annualised)	3.4%	4.2%
Latest 10 years (annualised)	5.5%	7.9%
Latest 5 years (annualised)	(0.8)%	5.1%
Latest 3 years (annualised)	13.8%	14.7%
Latest 1 year	23.9%	29.5%
Year to date	28.7%	29.7%

RISK STATISTICS SINCE LAUNCH

	Fund	Benchmark
Annualised Deviation	22.6%	20.2%
Sharpe Ratio	0.13	0.14
Maximum Gain	99.4%	56.3%
Maximum Drawdown	(50.0)%	(51.4)%
Positive Months	55.0%	56.0%

	Fund	Date Range
Highest annual return	106.2%	Mar 2009 - Feb 2010
Lowest annual return	(44.5%)	Jul 2021 - Jun 2022

MONTHLY PERFORMANCE RETURNS (AFTER FEES)

	Jan	Feb	Mar	Apr	May	Jun	Jul	Aug	Sep	Oct	Nov	Dec	YTD
Fund 2025	3.9%	0.4%	(1.3)%	2.8%	7.1%	5.8%	(1.0)%	4.5%	6.5%	1.6%	(4.1)%		28.7%
Fund 2024	(3.1)%	4.9%	3.6%	0.3%	2.6%	(1.5)%	(2.8)%	2.0%	9.4%	(3.8)%	(2.0)%	(3.8)%	5.0%
Fund 2023	11.6%	(7.6)%	2.3%	(1.5)%	(4.2)%	6.4%	6.7%	(5.9)%	(5.1)%	(4.4)%	9.8%	3.2%	9.2%
Fund 2022	(3.5)%	(13.0)%	(6.6)%	(9.0)%	0.6%	(6.7)%	4.4%	(0.6)%	(10.6)%	(2.3)%	18.4%	(0.2)%	(28.3)%
Fund 2021	2.2%	1.2%	(1.0)%	0.3%	0.6%	(0.4)%	(8.5)%	1.8%	(5.5)%	1.0%	(6.5)%	(0.3)%	(14.8)%

Total Expense Ratio	1 Year	3 Year
Fund management fee	1.54%	1.49%
Fund expenses	1.40%	1.38%
VAT	0.14%	0.11%
Transaction costs (inc. VAT)	0.00%	0.00%
Total Investment Charge	0.23%	0.23%
	1.77%	1.73%

PORTFOLIO DETAIL

EFFECTIVE GEOGRAPHIC EXPOSURE

Country	30 Nov 2025
Equities	99.3%
China	20.2%
Brazil	13.2%
India	12.0%
South Korea	11.2%
Taiwan	9.3%
Singapore	7.1%
Indonesia	4.8%
Hong Kong	3.7%
Italy	3.1%
France	3.0%
Other	11.8%
Cash	0.7%
USD	0.7%
ZAR	0.0%
Other	(0.1)%

TOP 10 HOLDINGS

As at 30 Sep 2025	% of Fund
Tsmc (Taiwan)	7.4%
Mercadolibre (Brazil)	5.5%
Sea (Singapore)	5.3%
Nu Holdings (Brazil)	5.1%
Prosus (China)	4.0%
Coupang (South Korea)	3.9%
Aia Group (Hong Kong)	3.7%
Hdfc Bank (India)	3.6%
Contemporary Amperex Techn (China)	3.3%
Bank Central Asia (Indonesia)	3.1%

SECTORAL EXPOSURE

As at 30 Nov 2025	Fund
Consumer Discretionary	40.5%
Financials	23.3%
Information Technology	16.0%
Industrials	9.9%
Communication Services	6.8%
Consumer Staples	1.5%
Energy	1.4%
Cash	0.7%